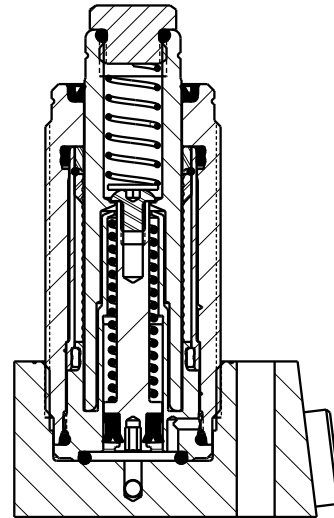




SEE IS1023 FOR SERVICE INSTRUCTIONS.
LUBRICATE ALL SEALS WITH CLEAN
HYDRAULIC OIL PRIOR TO ASSEMBLY.
DO NOT USE SILICONE BASED LUBRICANTS.



APPLY MEDIUM STRENGTH
THREAD LOCKER (BLUE)
TORQUE TO 9 Nm
(80 IN-LB)

TORQUE TO
1.25 Nm
(11 IN-LB)

PLUNGER

These work supports are
fully rebuildable to full
factory original capacity by
any authorized Vektek repair
facility. All seals can be
replaced by any authorized
repair facility.

BODY ASSEMBLY
NOT REPLACEABLE
TORQUE TO 47.5 Nm
(35 FT-LB)

INSTALL LIP
SIDE TOWARD
BOTTOM OF PISTON

TORQUE TO
2.7 Nm
(24 IN-LB)

TORQUE TO
6.8 Nm
(60 IN-LB)

FOR MANIFOLD MOUNTING,
REMOVE SAE 2 PLUG FROM
BASE AND INSERT O-RING
INTO COUNTERBORE

NO	QTY	PART NO	DESCRIPTION	STD SEAL KIT	SPRING KIT
1	1	21410076	BHCS, 6-32 x 3/16 SELFLOCK, SST		
2	1	21430022	WASHER		
3	1	23355024	SPRING, COMPRESSION		X
4	1	23355025	SPRING, COMPRESSION		X
5	1	30601123	PLUG, SOCH, SAE 2		
6	1	39000068	O-RING, (-202)	X	
7	1	39000069	O-RING, (-903)		
8	1	39050008	O-RING, (-014)	X	
9	1	39052057	SEAL, BEVEL, 3/32 X 5/32 X 11/32	X	
10	1	39054035	BU RING, (.157 X .089)	X	
11	1	41040604	BOLT, CONTACT, WS, FA, 6.2KN, LS		
12	1	41040607	BASE, WS, FA, 4.4 & 6.2 KN		
13	1	43068004	PLUG, 1/8 BSPP		
14	1	81010618	PISTON, WS, FA, HC, 2000, LS		
15	1	39V53003	WIPER, PRESS-IN, (9/16), VBGV	X	
N/A	N/A	60100136	KIT, SEAL, WS, FA, BM, HC, 8.9KN, 3 BOLT	NOTED	N/A
N/A	N/A	61100224	KIT, SPRING, WS, FA, HC, 2000, LS	N/A	NOTED
N/A	N/A	IS1023	INSTRUCTION SHEET	N/A	N/A

PARTS LIST



VEKTEK, INC.
1334 E. SIXTH AVE. P.O. BOX 625
EMPORIA, KS. 66801 U.S.A.

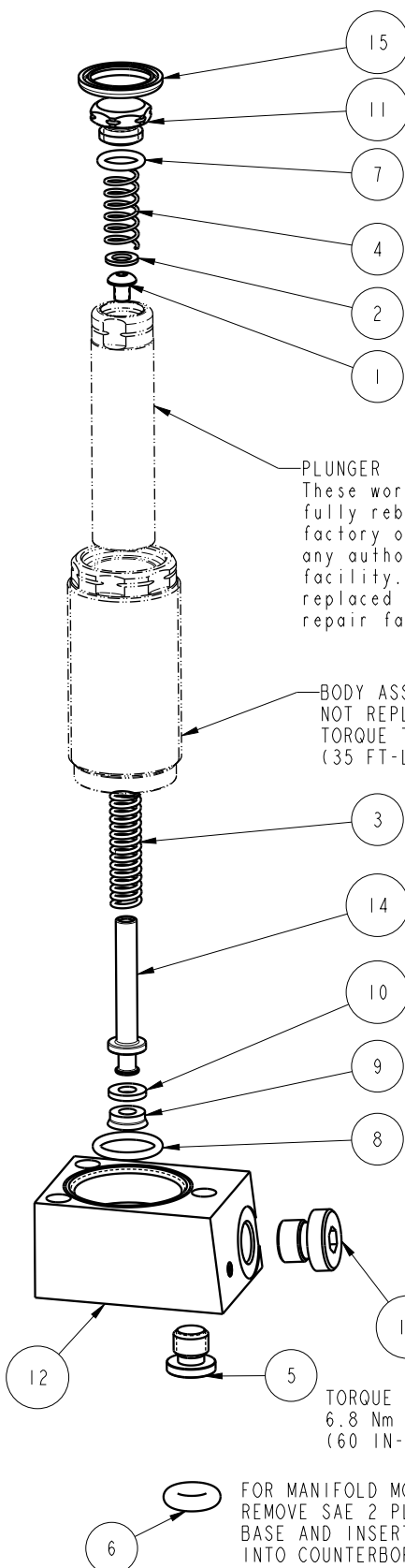
ASSEMBLIES AFFECTED
41080616

PARTS LIST, ASSY, WS, FA, BM, HC, 8.9KN, LS, 3 BOLT
DROP-IN REPLACEMENT FOR 41007014

SIZE
A MPL1071

REV
A

FORM FEG035_PL_ASIZE, REV. B



A	4631	RELEASE	RLK	2/28/22
REV	IN ACCORDANCE WITH ECN	EFFECTIVE DATE	REVISED BY	DATE
DRW BY:	RLK	DRAWING STATUS: Released		
DATE:	10/27/21	PRODUCTION APPROVED FOR RELEASED STATUS ONLY		

SHEET 1 OF 1